The background is a dark blue field filled with a dense, repeating pattern of white line-art icons. These icons represent various business and data concepts, including pie charts, bar graphs, line graphs, lightbulbs, gears, dollar signs, binary code (0s and 1s), speech bubbles, and network diagrams. The overall aesthetic is clean, modern, and professional.

# DAILY DATA LAB USER GUIDE

Key economic and financial  
data for your business

# The project

**Daily Data Lab** stems from the collaboration between the teams that are currently managing [ExportPlanning](#) and [PricePedia](#), two consolidated web projects respectively focused on internationalization and commodity prices.

Thanks to the teams' skills in terms of analysis and visualization of economic and financial data, Daily Data Lab can provide an agile support to any user interested in monitoring the daily dynamics of economic phenomena (and not only), as well as performing autonomous analysis.

The main topics covered in the tool are as follows:

- **Exchange rates** (effective, against the dollar and against the euro)
- **Stock exchange indexes**
- **Commodity prices**
- **Interest rates** (10-year sovereign bond yields and monetary-policy related interest rates)
- **Electricity consumption** during working hours which, according to recent economic literature, can be considered a proxy for a country's industrial production



Due to current extraordinary circumstance of health emergency, data tracking the **Covid-19 pandemic** in the world are included in the platform, as well. At the moment, they in fact represent a factor that necessarily needs to be taken into account when analyzing the economic situation.

# The sections

The website is structured in two sections, in order to meet different user needs.

The **Overview** section uses data visualization to provide a bird's-eye view of the most recent evolution of the different phenomena; on the other hand, the **Analytics** section allows to deepen and customize the study of the variables of interest, by selecting different time series for many countries and comparing them through line and bar graphs.

You can access the two sections through:

- **Dedicated buttons in the homepage**

OVERVIEW

Get an immediate update on the main economic and financial indicators

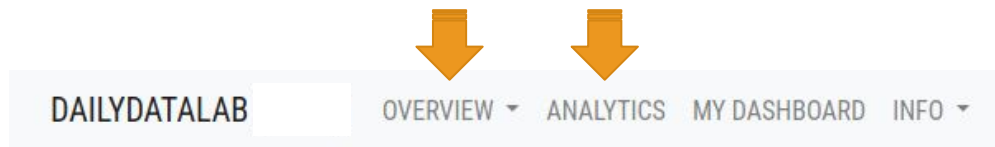
GO TO OVERVIEW

ANALYTICS

Analyze daily and monthly series for the main economic and financial indicators

GO TO ANALYTICS

- The **navigation bar**

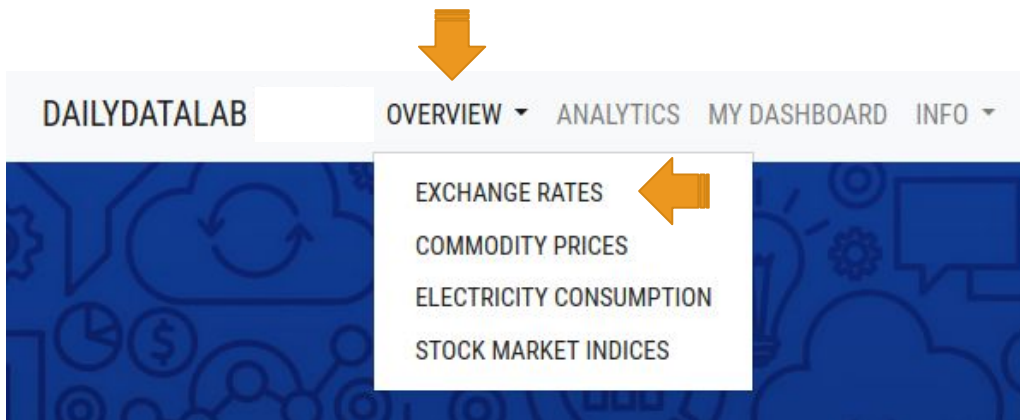


DAILYDATALAB OVERVIEW ▾ ANALYTICS MY DASHBOARD INFO ▾

The navigation bar is a horizontal light blue bar. On the left is the logo 'DAILYDATALAB'. To its right are the menu items 'OVERVIEW', 'ANALYTICS', 'MY DASHBOARD', and 'INFO'. 'OVERVIEW' and 'ANALYTICS' have small downward-pointing triangles next to them. Two large orange arrows point downwards from the 'OVERVIEW' and 'ANALYTICS' text in the block above to the corresponding menu items in the navigation bar.

# Overview section

You can explore the Overview section through the navigation bar, by clicking on the subject of interest.

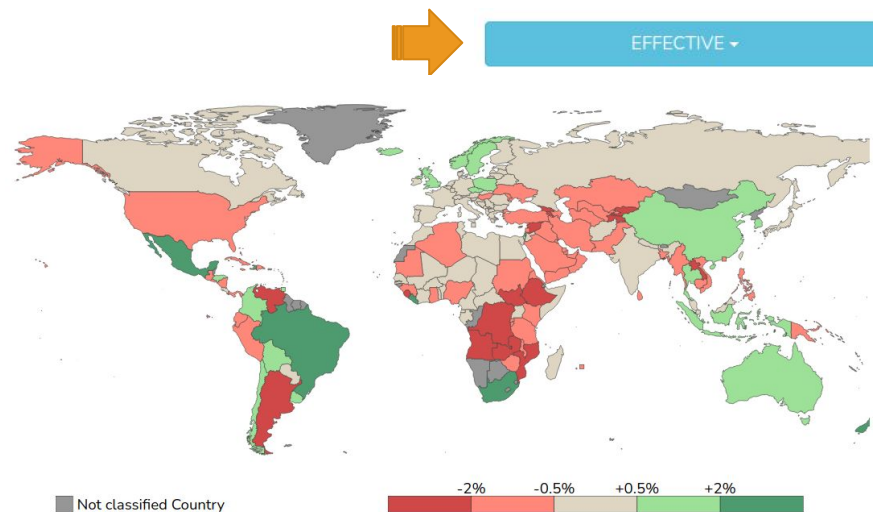
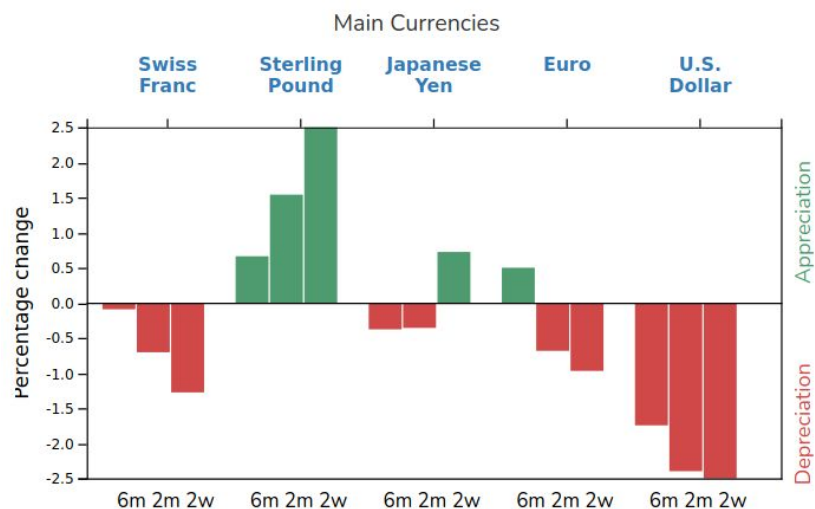


For each topic, we make use of specific charts and graphs, in order to grant a better visualization of the different phenomena.

# Overview: Exchange Rates

In the Exchange Rates section you can find:

- **Bar charts**, showing the monthly rate of change of the exchange rates of major currencies, over their 6-month (6m), 2-month (2m) and 2-week (2w) moving average
- **World map**, allowing a bird's-eye view of the most recent exchange rates dynamics

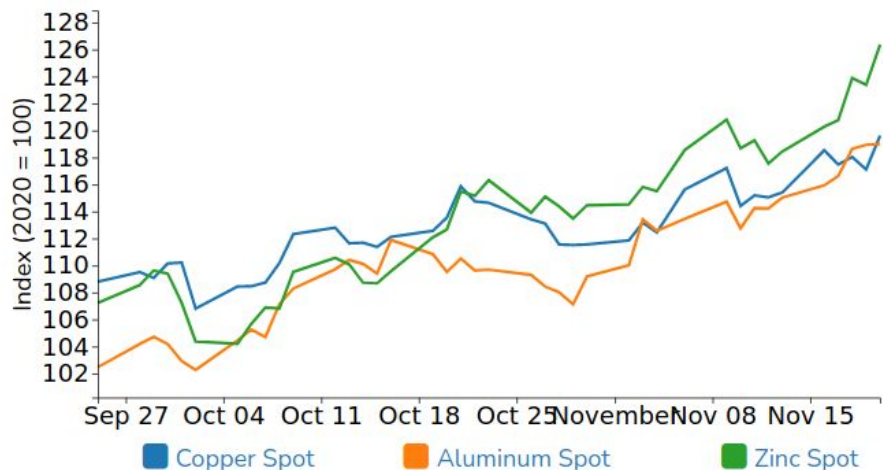


The light blue button on the upper right corner of the page allows to select the kind of exchange rate to display: effective exchange rate, exchange rate against the dollar or the euro.

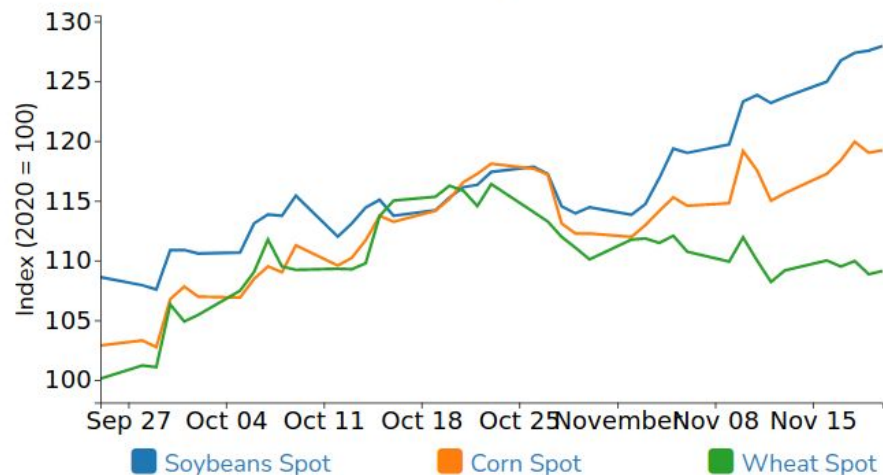
# Overview: Commodity prices

In the Commodity prices section you can find multiple line graphs that display price indexes for the main categories of commodities over the last two months.

## NON FERROUS



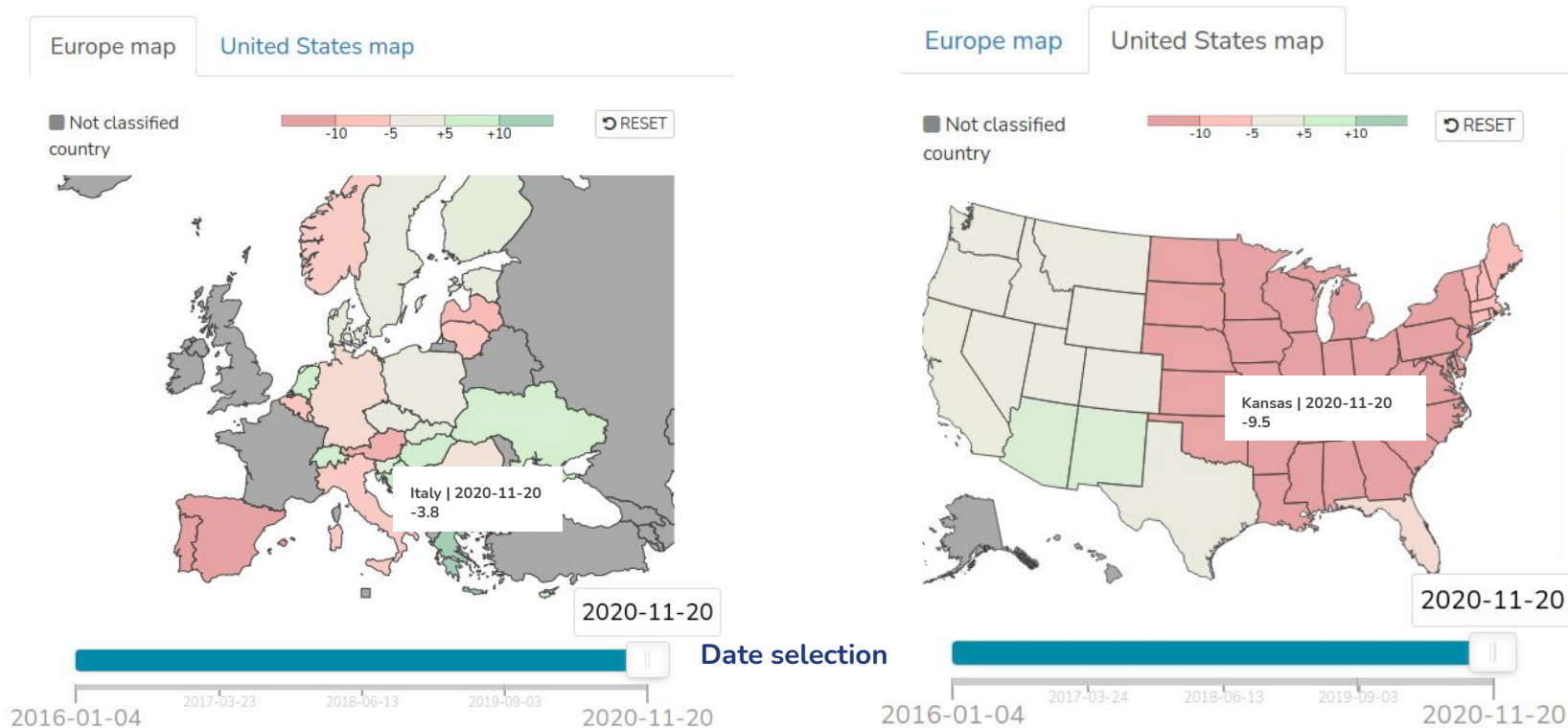
## FOOD



Using the tooltip you can display the price of the different commodities in any of the available dates.

# Overview: Electricity consumption

In the Electricity consumption section two maps are displayed, respectively showing year-over-year variations in daily electricity consumption during working hours in European countries and US states.



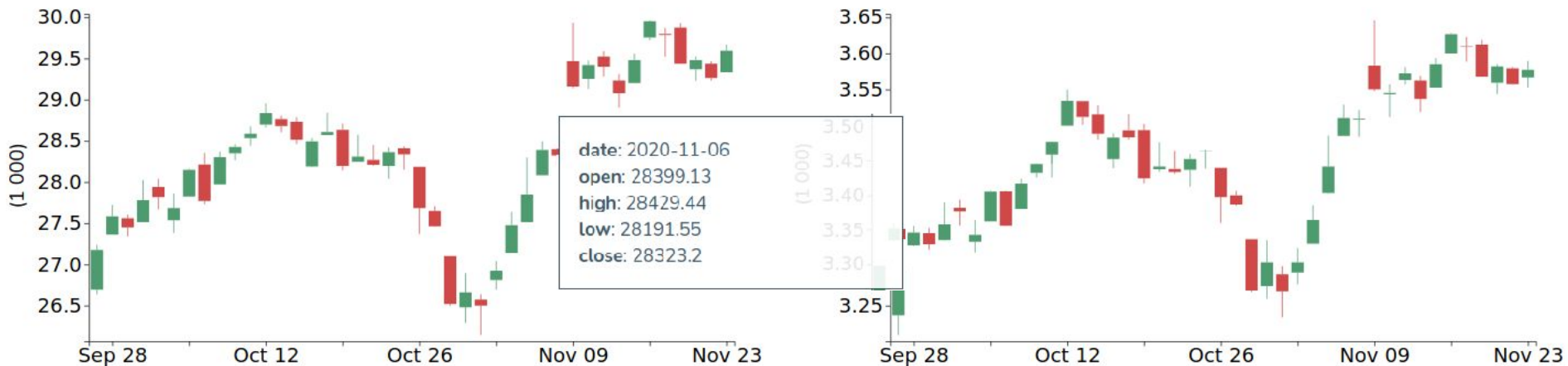


# Overview: Stock exchange indexes

We use candlestick charts to study the evolution of the main world stock exchange indexes over the last two months.

United States: Dow Jones Industrial Average

United States: S&P 500



Using the tooltip you can display the Open, High, Low and Close values for every available date.



# Analytics section

Daily Data Lab Analytics tool allows to create multiple line or bar charts, using data available in the two dropdown menu on the left: “Economic and financial data” and “Covid data”.

EDIT THE CHART

ECONOMIC AND FINANCIAL DATA

USA - S&P 500 x CO - WTI Spot x

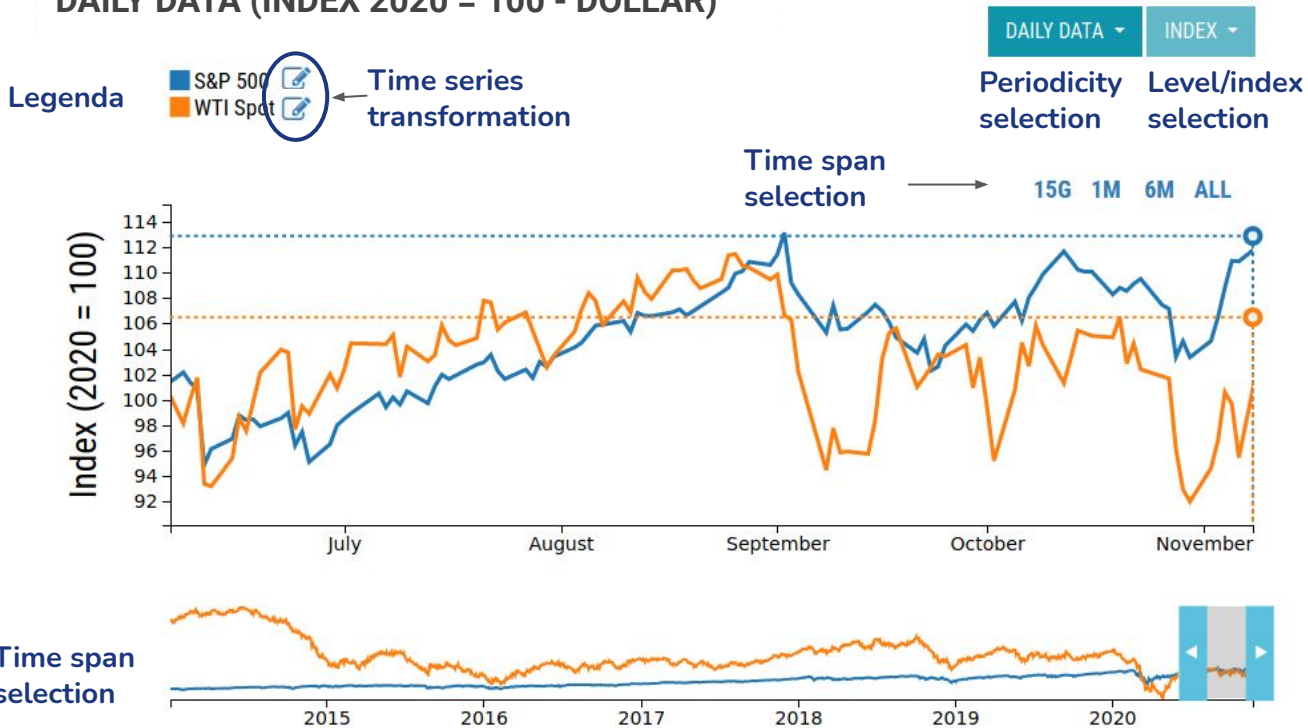
COVID DATA

Select one or more series

APPLY

Time series selection

## DAILY DATA (INDEX 2020 = 100 - DOLLAR)



# Analytics: time series

You can browse the full list of available time series, organized by theme, using the two dropdown menu on the left. By clicking on the theme of interest (e.g. exchange rates), you can display available time series, organized by subsections when needed (e.g. effective exchange rates, exchange rates against the dollar and the euro).

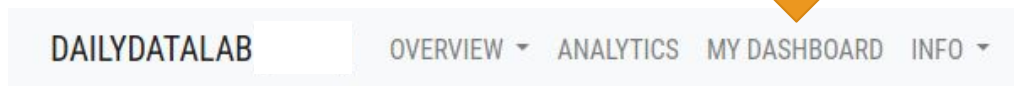
The diagram illustrates the navigation process in the analytics tool. It shows two instances of the 'EDIT THE CHART' interface. The left instance shows the 'ECONOMIC AND FINANCIAL DATA' section with a dropdown menu expanded to show a list of series: Exchange rates, Electricity consumption, Interest rates, Commodity prices, and Stock market indices. An orange arrow points from the left towards this panel. The right instance shows the 'ECONOMIC AND FINANCIAL DATA' section with a collapsed dropdown, followed by the 'COVID DATA' section and another dropdown menu expanded to show a list of series: Recovered, Active cases, Deaths, Confirmed cases, and Molecular tests. An orange arrow points from the right towards this panel.

# Premium service: My Dashboard

My Dashboard is a premium service you can request upon completion of your registration on [dailydatalab.com](https://dailydatalab.com). You can use your customized Dashboard to monitor the daily dynamics of economic and financial phenomena of interest, in an easy and intuitive way, through data visualization tools. Unlike the Overview and Analytics sections, freely accessible, the creation of a customized dashboard is a paid service ([click here](#) for information and fees).

## HOW CAN I REQUEST MY DASHBOARD?

- Register and/or log in on [dailydatalab.com](https://dailydatalab.com)
- Click on My Dashboard in the navigation bar



- Click on the button “Request your dashboard”



- Follow the instructions to create your dashboard
- Fill out and send the order form



**Access Daily Data Lab  
to keep up to date with the evolution  
of key phenomena for your business!**

[www.dailydatalab.com](http://www.dailydatalab.com)